



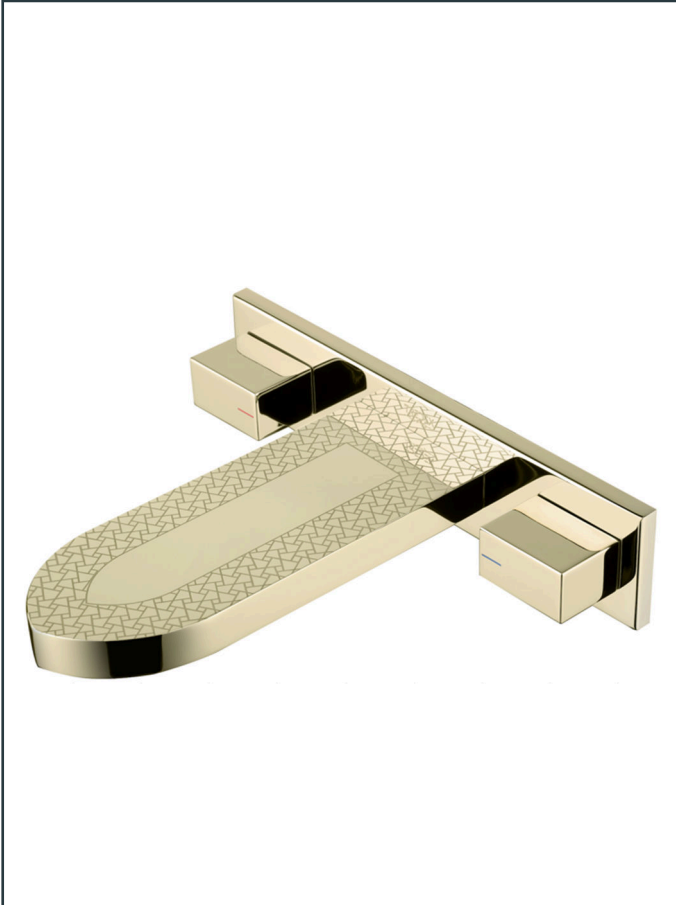
**SARA**

1967

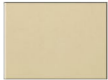
**SPECIFICATION SHEET**



**Photo**



**Product Information**

|                           |  |
|---------------------------|--|
| <b>Item Descriptions:</b> | Three-hole basin mixer with pop-up waste   |
| <b>Model:</b>             | ARABESQUE  |
| <b>Article No:</b>        | 881910-SG  |
| <b>Material:</b>          | Brass  |
| <b>Brand:</b>             | TREDEX   |
| <b>Finish:</b>            | The colour / finish may vary on actual<br><br>Champagne Gold  |

**Specifications:**

Three-hole basin mixer, concealed parts included with pop-up waste. With flow rate (at 3 bar) 3.7 l/min.



**Platinum Warranty**

Extended, reliable warranty designed for complete peace of mind.



**Perma Shine**

Durable, long lasting brilliant finish ensuring a high gloss, mirror-like shine.



**ForeverEndurance**

Completed an endurance test, surpassing half a million cycles.



**Ex-Brass**

Enhanced health protection resulting from minimal lead content.



**PermaFinish**

PVD brilliant and long-lasting finish



**Eco-Mix**

Air-infused water provides a luxurious water experience while using lesser water.



**Flexi Stream**

Manual adjustment of the water stream for an optimal angle selection.



**Quick Clean**

Enables manual limescale removal.



**Eco-Flo**

Water and energy savings for ecological and economical reasons.

**TECHNICAL DRAWING**

